

The Tinella hatchery

Manager:

[Associazione APD Tinella '72,](#)

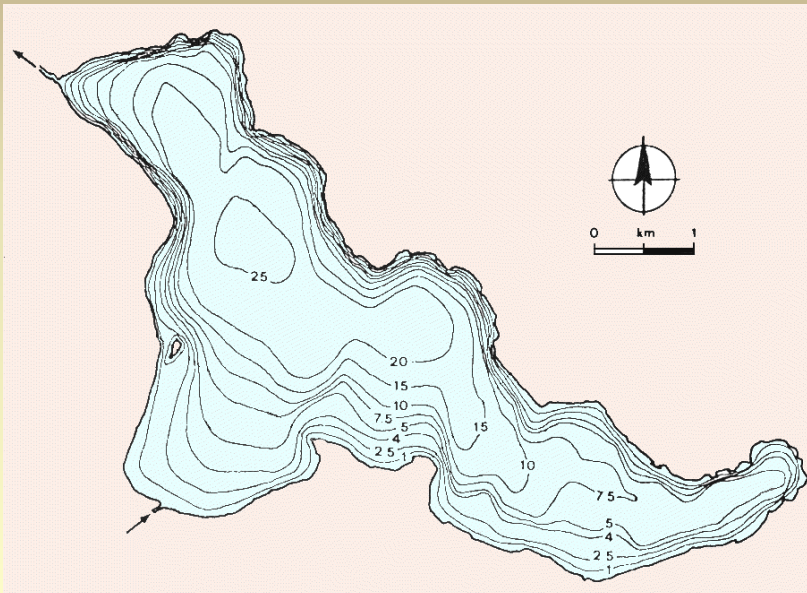
Gavirate (VA, Italy)



The site

Tinella is named a stream flowing from the Mount Campo dei Fiori (VA, Italy) to the lake of Varese, near Gavirate. The basin is located in a prealpine region rich of wetlands, but highly inhabited and industrialized.

An inland hatchery is located on the stream strand and aimed to repopulate lakes and rivers in the surrounding region with autochthonous species. The hatchery is managed by the [Associazione APD Tinella '72](#), Gavirate (VA, Italy).



Lake of Varese: Max. depth ca. 25 m, surface ca. 14,8 kmq, elevation 238 m s.l.m.

Zoug jars and spawning tanks

Species reared at the Tinella hatchery:

Salmo trutta fario, *Perca fluviatilis*, *Alburnus alburnus alborella*



Tanks for hatching eggs, larvae and fry

Zoug jars

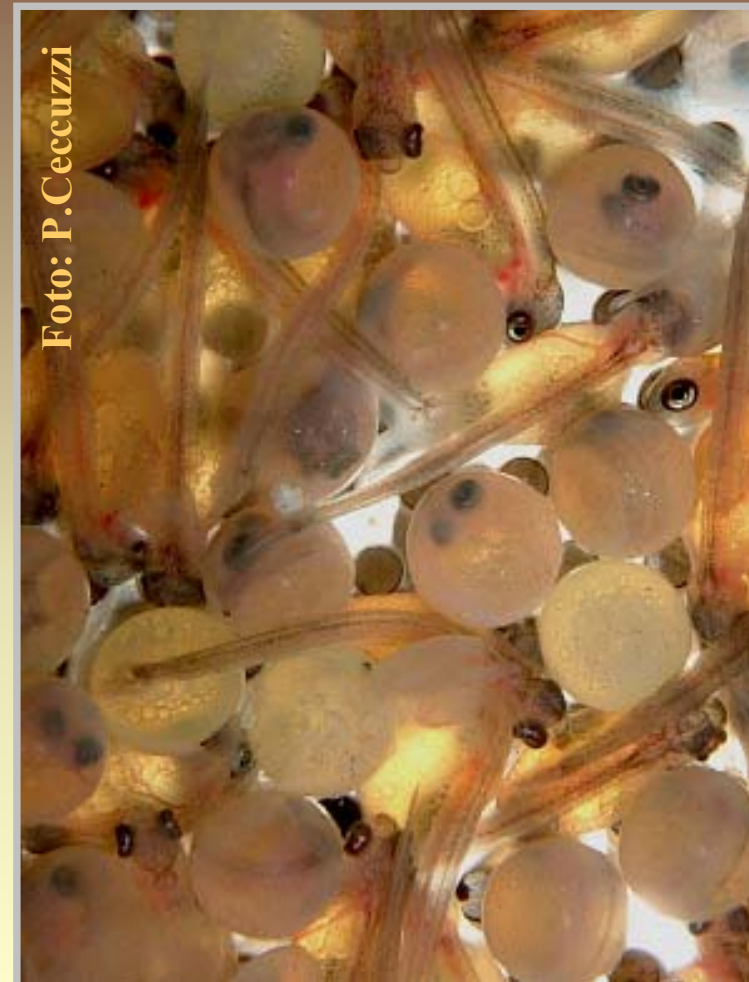


Tanks for hatching





Trout: fertilised (“eyed”) eggs and larvae





Trout: fry

Fry near the end of their larval stage, starting eating.



Trout: an adult individual

Foto: P.Ceccuzzi

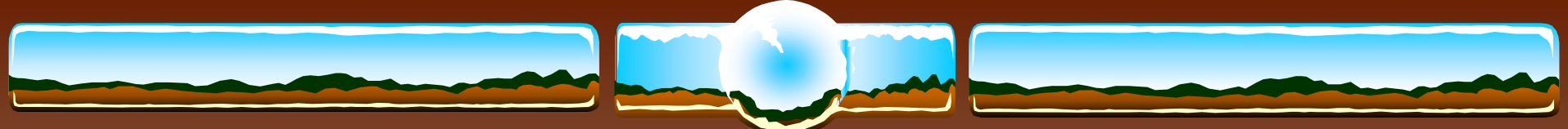




S. trutta fario: stabulation of adults



Foto: P.Ceccuzzi



S. trutta fario: a full-sized reproductive individual



The team



R. Bogni
G. Del Torchio
Two forest's
warder
P. Ceccuzzi

P. Brani
G. Zanetti
F. Miglierina
E. Palma